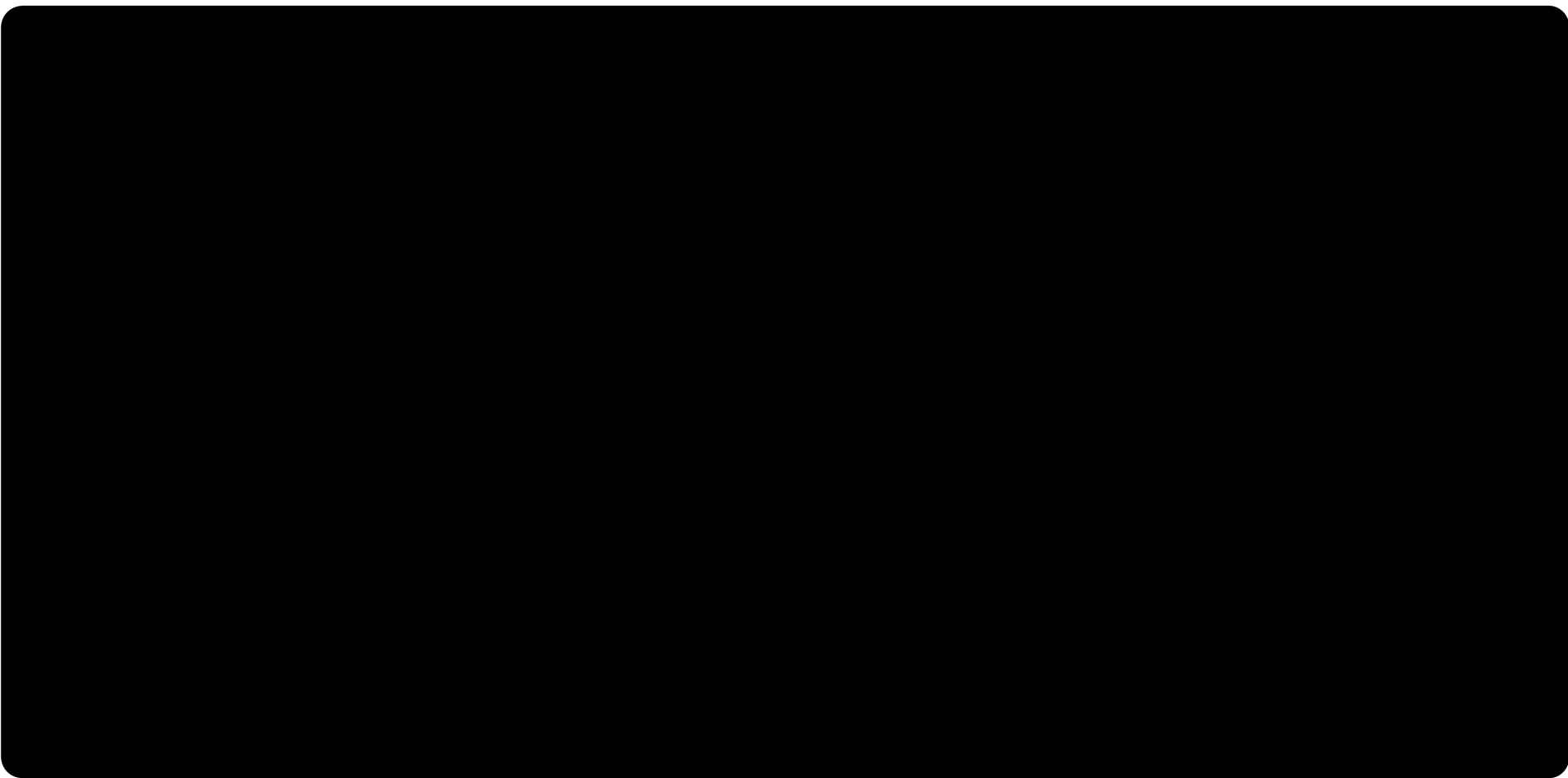


The following sample(s) was/were submitted and identified on behalf of the clients as : High Bonding Acrylic Tape

SGS Job No. : CP19-038817 - GZ
Model No. : 8204T Nano-glue sandwich
Date of Sample Received : 19 Jul 2019
Testing Period : 19 Jul 2019 - 25 Jul 2019
Test Requested : Selected test(s) as requested by client.
Test Method : Please refer to next page(s).
Test Results : Please refer to next page(s).



Test Report

No. CANEC1914211707

Date: 25 Jul 2019

Page 2 of 5

Test Results :

Test Part Description :

Specimen No.	SGS Sample ID	Description
SN1	CAN19-142117.004	Colorless transparent adhesive tape

Remarks :

- (1) 1 mg/kg = 0.0001%
- (2) MDL = Method Detection Limit
- (3) ND = Not Detected (< MDL)
- (4) "-" = Not Regulated

Elementary Analysis & Flame Retardants

Test Method : With reference to IEC 62321-4:2013+A1:2017, IEC 62321-5:2013, IEC 62321-7-2:2017 and IEC 62321-6:2015, analyzed by ICP-OES , UV-Vis and GC-MS .

Test Item(s)	Unit	MDL	004
Cadmium (Cd)	mg/kg	2	ND
Lead (Pb)	mg/kg	2	ND
Mercury (Hg)	mg/kg	2	ND
Hexavalent Chromium (CrVI)	mg/kg	8	ND
Sum of PBBs	mg/kg	-	ND
Monobromobiphenyl	mg/kg	5	ND
Dibromobiphenyl	mg/kg	5	ND
Tribromobiphenyl	mg/kg	5	ND
Tetrabromobiphenyl	mg/kg	5	ND
Pentabromobiphenyl	mg/kg	5	ND
Hexabromobiphenyl	mg/kg	5	ND
Heptabromobiphenyl	mg/kg	5	ND
Octabromobiphenyl	mg/kg	5	ND
Nonabromobiphenyl	mg/kg	5	ND
Decabromobiphenyl	mg/kg	5	ND
Sum of PBDEs	mg/kg	-	ND
Monobromodiphenyl ether	mg/kg	5	ND
Dibromodiphenyl ether	mg/kg	5	ND
Tribromodiphenyl ether	mg/kg	5	ND
Tetrabromodiphenyl ether	mg/kg	5	ND
Pentabromodiphenyl ether	mg/kg	5	ND

Test Report

No. CANEC1914211707

Date: 25 Jul 2019

Page 3 of 5

<u>Test Item(s)</u>	<u>Unit</u>	<u>MDL</u>	<u>004</u>
Hexabromodiphenyl ether	mg/kg	5	ND
Heptabromodiphenyl ether	mg/kg	5	ND
Octabromodiphenyl ether	mg/kg	5	ND
Nonabromodiphenyl ether	mg/kg	5	ND
Decabromodiphenyl ether	mg/kg	5	ND

Notes :

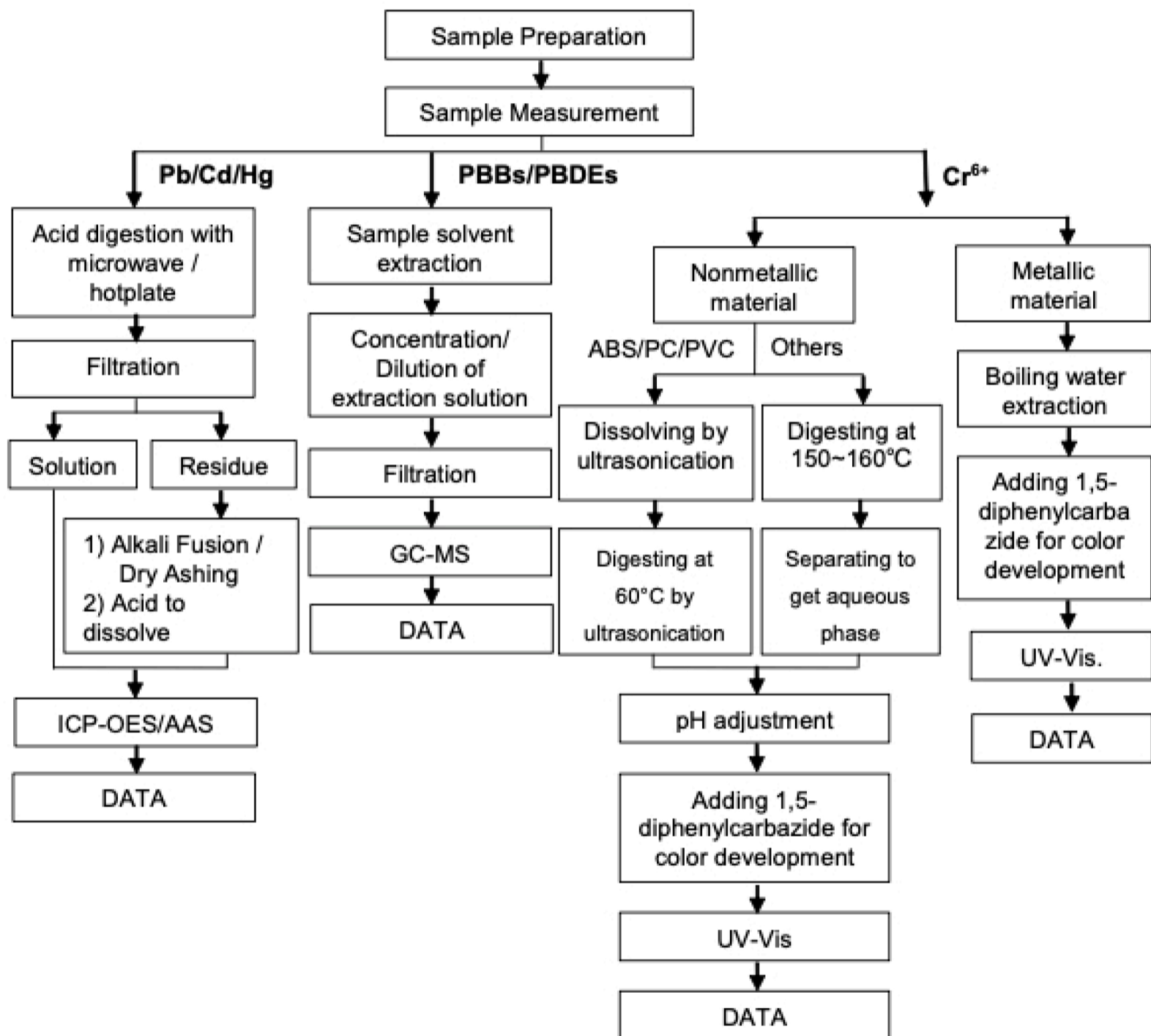
(1) IEC 62321 series is equivalent to EN 62321 series

http://www.cenelec.eu/dyn/www/f?p=104:30:1742232870351101:::FSP_ORG_ID,FSP_LANG_ID:1258637,25.

ATTACHMENTS

Pb/Cd/Hg/Cr⁶⁺/PBBs/PBDEs Testing Flow Chart

1) These samples were dissolved totally by pre-conditioning method according to below flow chart.
(Cr⁶⁺ and PBBs/PBDEs test method excluded).



Sample photo:



SGS authenticate the photo on original report only

*** End of Report ***